

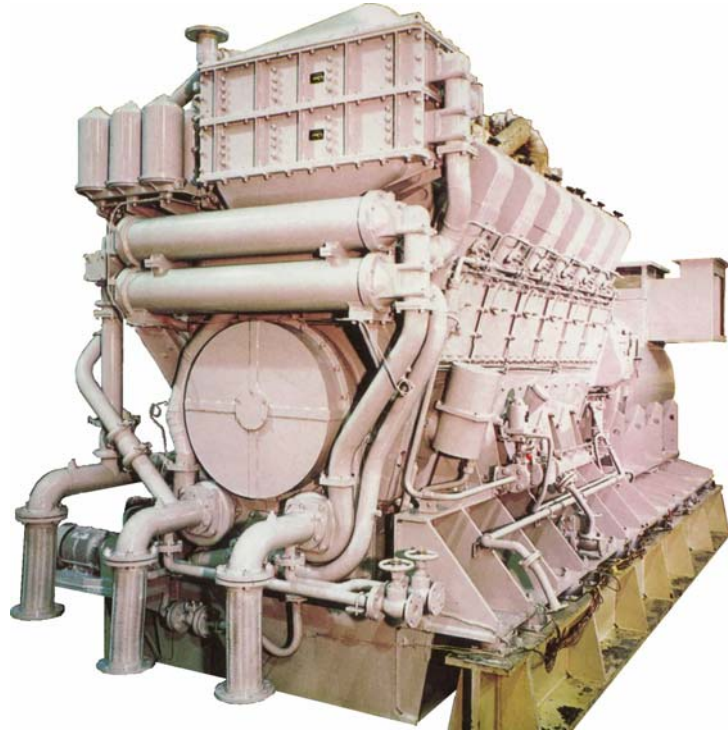
# Arun International

For Reliable Power

## MITSUBISHI POWERED MEDIUM SPEED GENERATING SETS

**All Arun Generating sets are manufactured to International Standards and renowned for their superior performance and reliability.**

**Based on years of experience, these generating sets provide the benefits of low fuel consumption, low maintenance and flexible options.**



Mitsubishi generating sets are designed to operate on a wide variety of fuels to achieve cost effective solutions to power generation. The generating set can be provided as a basic unit or complete with full mechanical and electrical equipment including:

- Fuel and oil storage facilities
- Fuel treatment plant
- Various output voltages
- Electric or Compressed Air Starting Systems
- Complete Exhaust and Cooling Systems
- Full control systems
- Switchgear, Transformers and Distribution
- Mechanical installation
- Electrical Installation
- On site training



### APPLICATIONS

Mitsubishi generating sets are ideal for the following applications where you can depend on its robust construction, reliability, easy maintenance and worldwide support:

- Base Load Power to the grid
- Island Operation
- Peak Lopping and Standby Duties
- Medium and High Voltage

## GENERATING SET GENERAL TECHNICAL DATA

SPEED	750 RPM				1000 RPM			
	50 Hz				50 Hz			
	Prime (PRP)		Standby (LTP)		Prime (PRP)		Standby (LTP)	
Engine Type	kVA	kW	kVA	kW	kVA	kW	kVA	kW
S6U-PTA	971	777	1068	854	1457	1165	1511	1209
S6U-PTK	1068	854	1165	932	1556	1245	1622	1298
S6U2-PTA	1136	909	1250	1000	1567	1254	1674	1339
S6U2-PTK	1218	974	1339	1071	1669	1335	1782	1426
S8U-PTA	1295	1036	1423	1139	2000	1600	2200	1760
S8U-PTK	1423	1139	1553	1242	2074	1659	2162	1730
S12U-PTA	1942	1553	2136	1709	2915	2332	3019	2415
S12U-PTK	2136	1709	2330	1864	3112	2489	3244	2595
S16U-PTA	2588	2071	2848	2278	3886	3108	4028	3223
S16U-PTK	2848	2278	3107	2485	4148	3319	4325	3460

SPEED	900 RPM				1200 RPM			
	60 Hz				60 Hz			
	Prime (PRP)		Standby (LTP)		Prime (PRP)		Standby (LTP)	
Engine Type	kVA	kW	kVA	kW	kVA	kW	kVA	kW
S6U-PTA	1309	1047	1354	1083	1546	1236	1622	1298
S6U-PTK	1408	1126	1464	1171	1644	1315	1705	1364
S6U2-PTA	1433	1146	1507	1206	N/a	N/a	N/a	N/a
S6U2-PTK	1531	1225	1606	1284	N/a	N/a	N/a	N/a
S8U-PTA	1746	1397	1804	1443	2060	1648	2162	1730
S8U-PTK	1877	1501	1952	1562	2191	1753	2274	1819
S12U-PTA	2618	2095	2706	2165	3091	2473	3244	2595
S12U-PTK	2815	2252	2928	2342	3288	2630	3410	2728
S16U-PTA	3492	2794	3608	2887	4121	3297	4325	3460
S16U-PTK	3754	3003	3905	3124	4384	3507	4547	3637

All ratings data based upon operation at up to 40°C, 1000m.a.s.l. and 60% relative humidity. Above these, derates may apply.  
kVA Ratings based on 0.8 power factor.

**Prime power** – Power available at variable load in lieu of main power network. An overload of 10% is permitted for one hour in every twelve hours of operation.

**Standby Power** – Power available at variable load in the event of a main power network failure. No overload is permitted.

For further information on complete range of mechanical and electrical options please contact our U.K. Sales Office or Agent in your local country.

**Arun International (Power) Ltd**  
Unit F1 Dominion Way, Rustington Trading Estate  
Rustington, West Sussex  
BN16 3HQ, United Kingdom  
**Tel:** +44 1903 850285  
**Fax:** +44 1903 850636  
**Email:** sales@arunpower.co.uk  
**Website:** www.arunpower.com

Distributed By: