

**Arun Power**

For reliable power

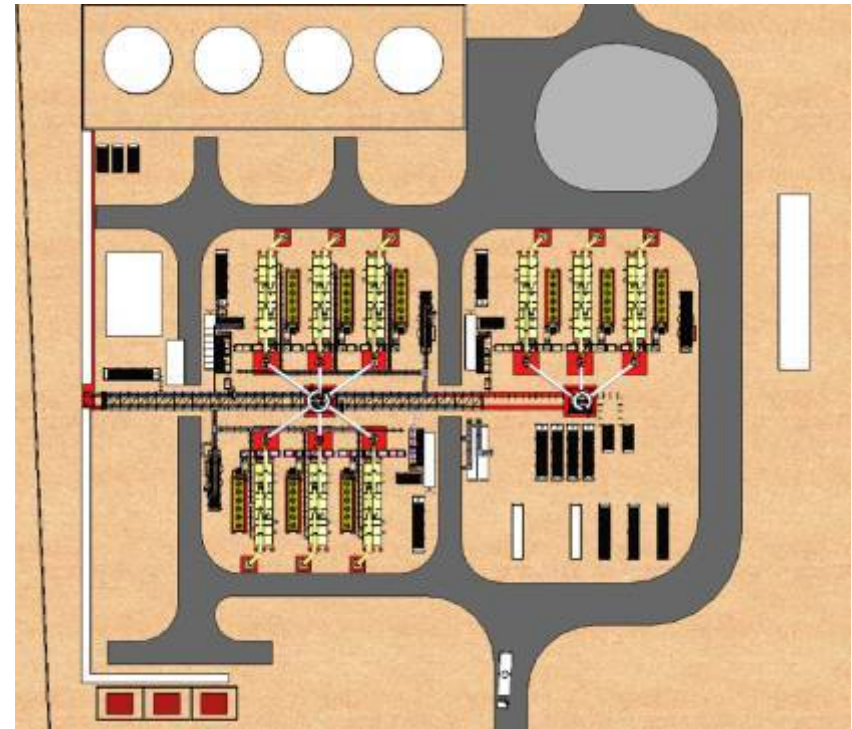
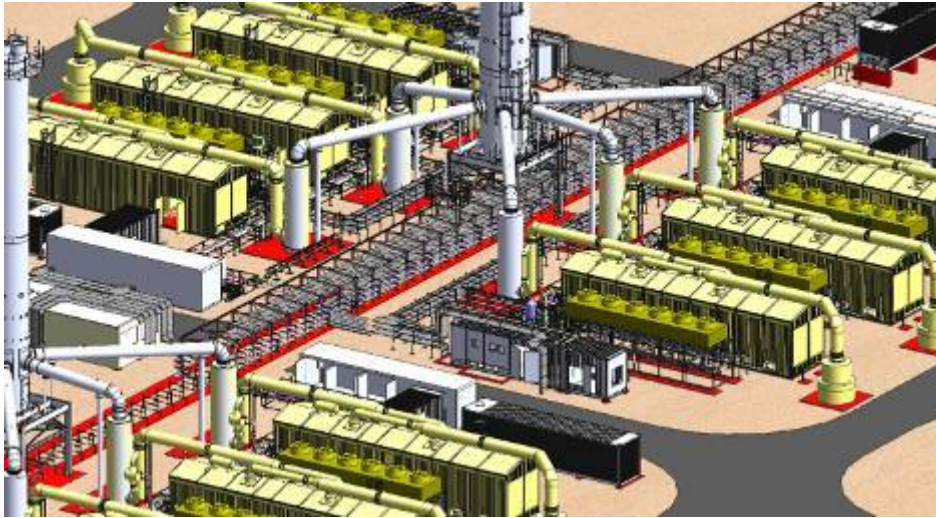
**36MW Power Plant  
Nouakchott, Mauritania**



**General Layout Solidworks 3D Model**

# Arun Power

For reliable power



# Arun Power

For reliable power



# Arun Power

For reliable power



# Arun Power

For reliable power



**Module 4**  
MV/LV Electrical Module

# Arun Power

For reliable power



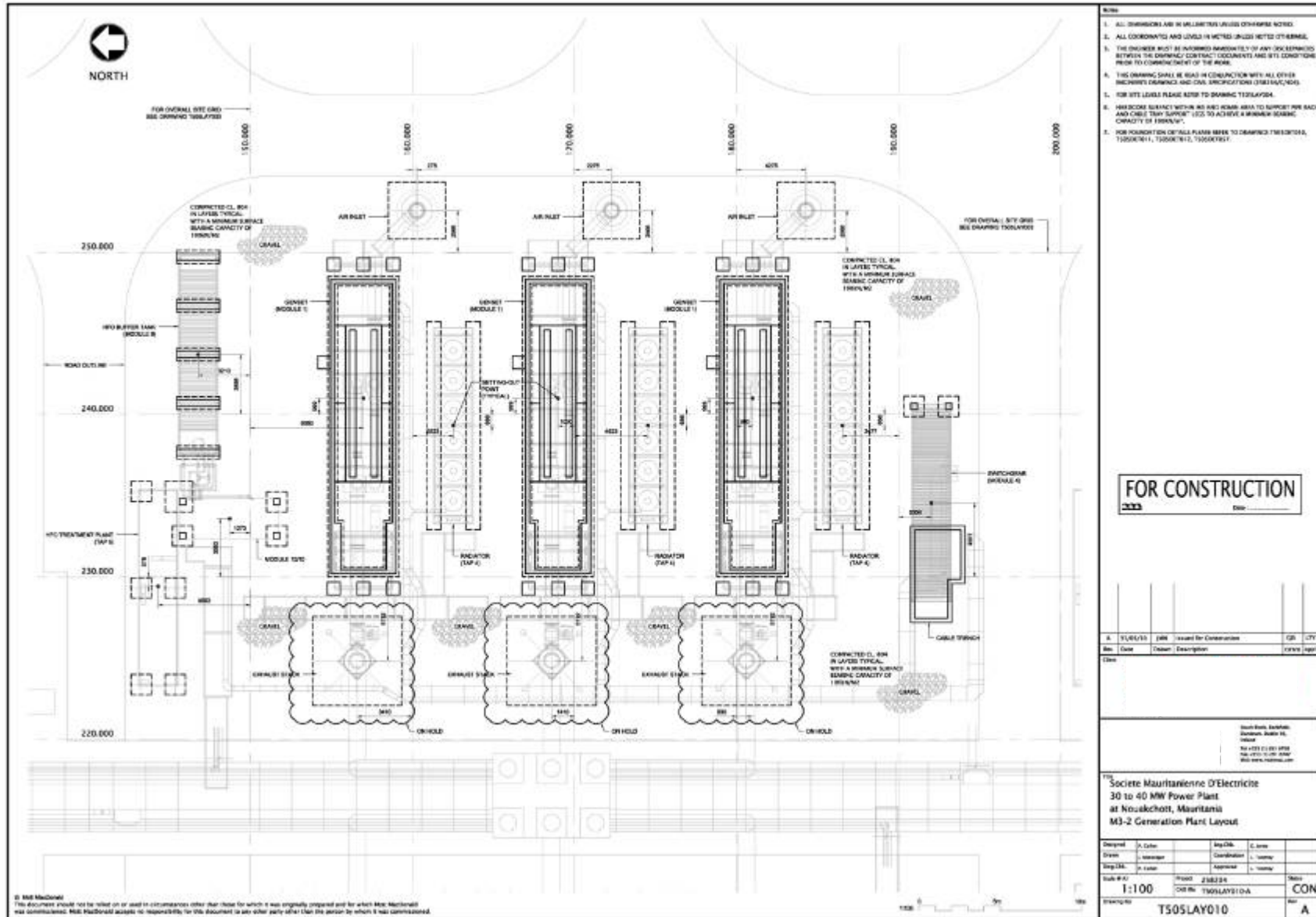
# Arun Power

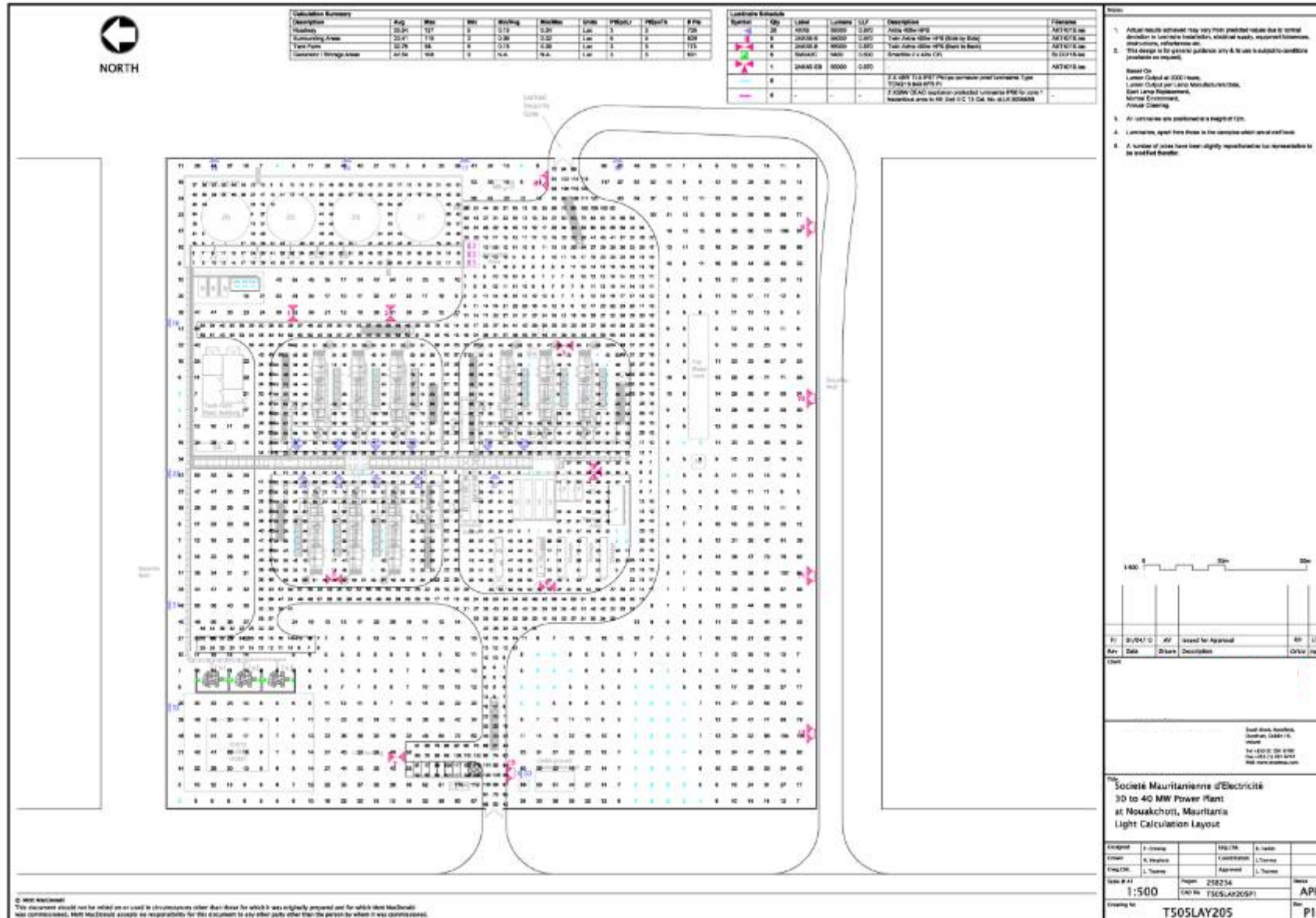
For reliable power











Calculation Summary	Qty	Area	Vol	Working	Distance	Grid	Height	Height	# Fix
Gridlines	20.00	127	0	0.15	0.20	1.00	3	3	720
Surrounding Area	20.00	118	0	0.30	0.20	1.00	3	3	808
Plant Area	20.00	18	0	0.15	0.20	1.00	3	3	720
Calculation Storage Area	20.00	168	0	0.15	0.20	1.00	3	3	808

Number	Qty	Label	Quantity	Height	Description	Reference
1	8	4000	8000	0.80	Axis 4000-8000	ART 015.00
2	8	2400/30	8000	0.80	Y-axis 2400-3000 (Blue by Blue)	ART 015.00
3	8	2400/30	8000	0.80	Y-axis 2400-3000 (Blue by Blue)	ART 015.00
4	8	2400/30	8000	0.80	Y-axis 2400-3000 (Blue by Blue)	ART 015.00
5	8	2400/30	8000	0.80	Y-axis 2400-3000 (Blue by Blue)	ART 015.00
6	8	2400/30	8000	0.80	Y-axis 2400-3000 (Blue by Blue)	ART 015.00
7	8	2400/30	8000	0.80	Y-axis 2400-3000 (Blue by Blue)	ART 015.00
8	8	2400/30	8000	0.80	Y-axis 2400-3000 (Blue by Blue)	ART 015.00

- Notes:**
- Actual results achieved may vary from predicted values due to spatial distribution in luminaires installation, electrical loads, weather conditions, maintenance, reflectance etc.
  - This design is for general guidance only & its use is subject to conditions provided as required.
- Based On:**  
 Lumen Output at 1000 hours  
 Lumen Output per luminaire Manufacturer's Data  
 Ball Lamp Requirement  
 Normal Environment  
 Average Ceiling
- All luminaires are positioned a height of 0.8m.
  - Luminaires are set from floor to the luminaires when installation.
  - A number of tables have been slightly repositioned for representation in the grid plan.



PI	20/04/10	PI	Issued for Approval	PI	PI
Rev	Date	Drawn	Description	Checked	Issued

Scale: 1:500  
 Date: 20/04/10  
 Drawn: [Name]  
 Checked: [Name]  
 Issued: [Name]

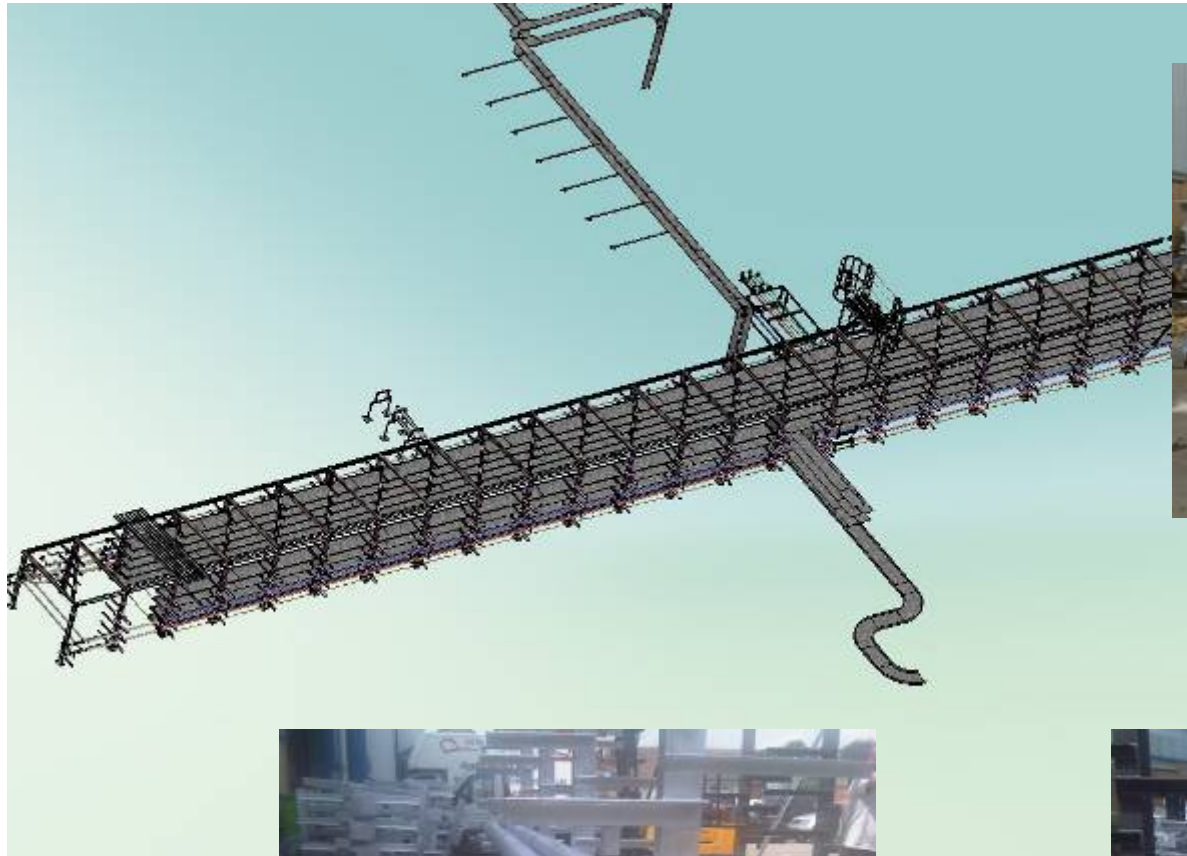
**Société Mauritanienne d'Electricité**  
 3D to 40 MW Power Plant  
 at Nouakchott, Mauritania  
 Light Calculation Layout

Project	3D to 40 MW	Client	Société Mauritanienne d'Electricité
Drawn	[Name]	Checked	[Name]
Issued	[Name]	Approved	[Name]
Scale	1:500	Page	2/82254
Drawing No.	TS05LAY205	Date	APR
Issued to	TS05LAY205	Rev	PI

© 2010 Macdonald  
 This document should not be relied on or used in circumstances other than those for which it was originally prepared and for which Macdonald was commissioned. Macdonald accepts no responsibility for this document to any other party other than the person to whom it was commissioned.

# Arun Power

For reliable power



# Arun Power

For reliable power

